



THE WATERLINE

District Manager

Jan King
jking@wbsnet.org

Administrative Assistant

Ashley Vondracek
ashleyv@wbsnet.org

Technician

Pat Ryan
wkgmd1@wbsnet.org

Weather Modification Manager

Kyle Spencer
hangar@wbsnet.org

Meteorologist

Walt Geiger
hailman@pld.com

Board President

Greg Graff, Wichita County

Vice President

Danny Welsh, Wallace County

Secretary / Treasurer

Robert Hoeme, Jr., Scott County

Member

Alan James, Lane County

Member

Arla Peter, Greeley County

District Information:

Address:
906 W. 5th, P.O. Box 604
Scott City, KS 67871
Web site:
<http://www.gmd1.org>
Telephone:
(620) 872-5563
Fax:
(620) 872-7315

VOLUME 13, ISSUE 1

<http://www.gmd1.org>

MARCH 2013

40TH ANNUAL MEETING

The Western Kansas Groundwater Management District's 40th Annual Meeting will be held March 19, 2013 at 1:30 p.m. (CST) at Scott City, KS in the Wm Carpenter 4-H Building located at Scott County Fairgrounds. Included in the Program will be updates on District activities, presentation of the 2014 proposed budget and the election of the Scott County Board Member and the Greeley County Board Member. Tracy Streeter, Director of the Kansas Water Office, will be giving updates from Topeka on new legislation as well as Ogallala Aquifer initiatives. Brownie Wilson from the Kansas Geological Survey will also be in attendance to discuss the recent water level measurements and the District wide modeling project. The latest Local Enhance Management Area (LEMA) information will be presented and discussed.

IMPORTANT DATES

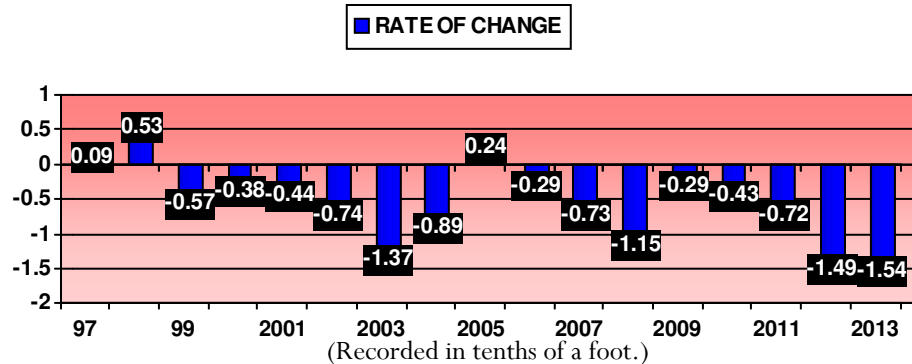
- *March 19, 2013 GMD#1 Annual Meeting & March Board Meeting in Scott City, KS, at Wm Carpenter 4-H Bldg, Scott County Fairgrounds*
- *March 28, 2013 Weather Modification Annual Meeting Lakin, KS Kearny County Fairgrounds*
- *April 1 Verified Claims due*
- *July 16, 2013 GMD1 2014 Budget Hearing*

NEW OVERPUMPING PENALTIES

Starting with the **2013** calendar year, KS Department of Ag (KDA) will apply the following revised penalties for overpumping. **FIRST OFFENSE:** Notice of Non-Compliance letter (NONC); **SECOND OFFENSE:** Monetary fine of \$1,000 & a reduction in authorized quantity for the following irrigation season by TWO times the amount overpumped; **THIRD OFFENSE:** Monetary fine of \$1,000 per day of overpumping (capped at \$10,000) & a one-year suspension; **FOURTH OFFENSE:** Water Right Revocation. There may be exceptions to the progression listed above. For example, if overpumping is flagrant, the agency may proceed to a stricter penalty without waiting for repeat offenses. Sanction documents will be recorded with the local County Register of Deeds to ensure individuals who purchase land are aware of any water pumping violations. Once annually, the KDA will publish a list of all individuals in KS who violate their water right by overpumping. The list will be distributed to media statewide.

REVISED WATER LEVELS

Each year the KS Geological Survey and the KS Division of Water Resources measure water levels in approximately 1,400 water wells in 47 western and central Kansas counties. Decline for GMD#1 has been 10.17 ft. from 1997 to 2013 which averages .598 ft. per year.



LATEST WATER LEVEL TRENDS



PLAN TO ATTEND OUR

LEMA DISCUSSION

VENDOR DISPLAYS

MARCH 19TH

UPDATES FROM TOPEKA

DISTRICT ACTIVITIES

40TH ANNUAL MEETING!!

ELECTION OF SCOTT & GREELEY COUNTY BOARD MEMBERS

MANAGER'S MESSAGE:

Be sure to join us for our 40th Annual Meeting being held in Scott City at the Wm Carpenter 4-H Building. We will be presenting the most recent Local Enhanced Management Area (LEMA) plans for the District. You will want to be there to offer your input on future conservation measures in water usage.

ALSO:

DON'T FORGET!!! If you repair or replace an hour meter or a flow meter, you are required to fill out a "Repair/Replacement Form" within 30 days. If you replace your meter, be sure to write down the reading from the old meter the day it is removed as well as the manufacturer, model, and serial number. Copies of the "Repair / Replacement Form" can be found on our website: <http://www.gmd1.org>. For more information on flowmeters or other issues, please contact the office: (620) 872-5563.



SEE YOU AT THE ANNUAL MEETING
ON MARCH 19, 2013 IN SCOTT CITY!!

CHECK OUT OUR WEB SITE: <http://www.gmd1.org>